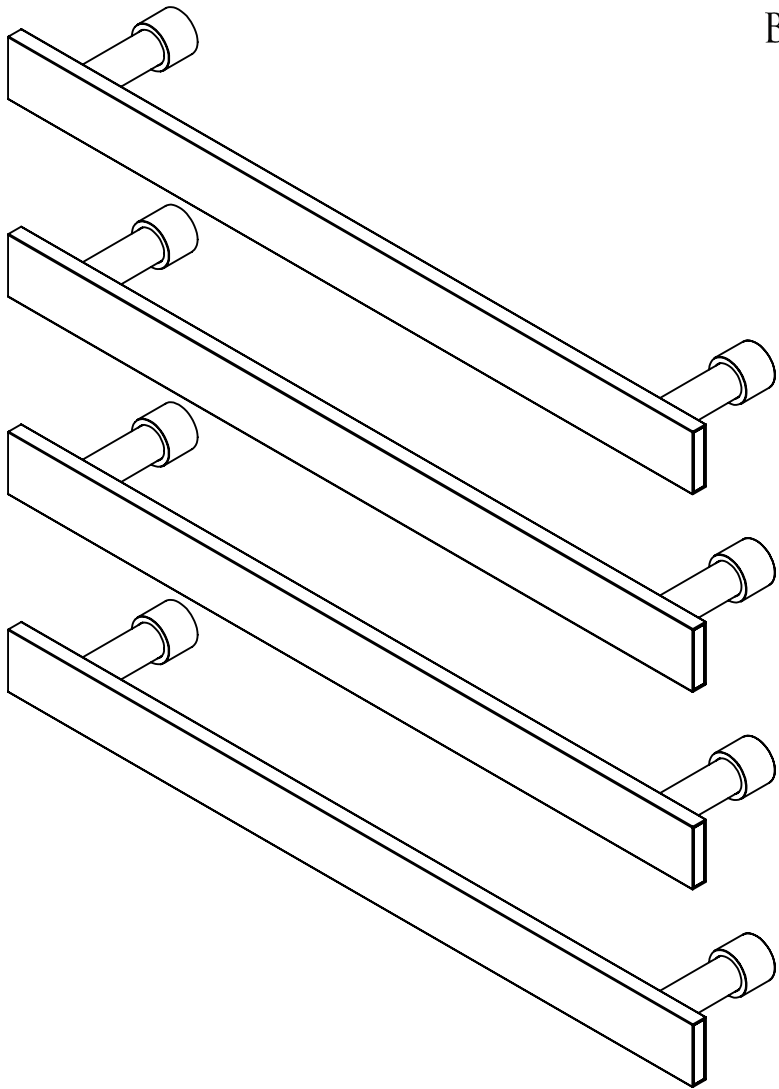
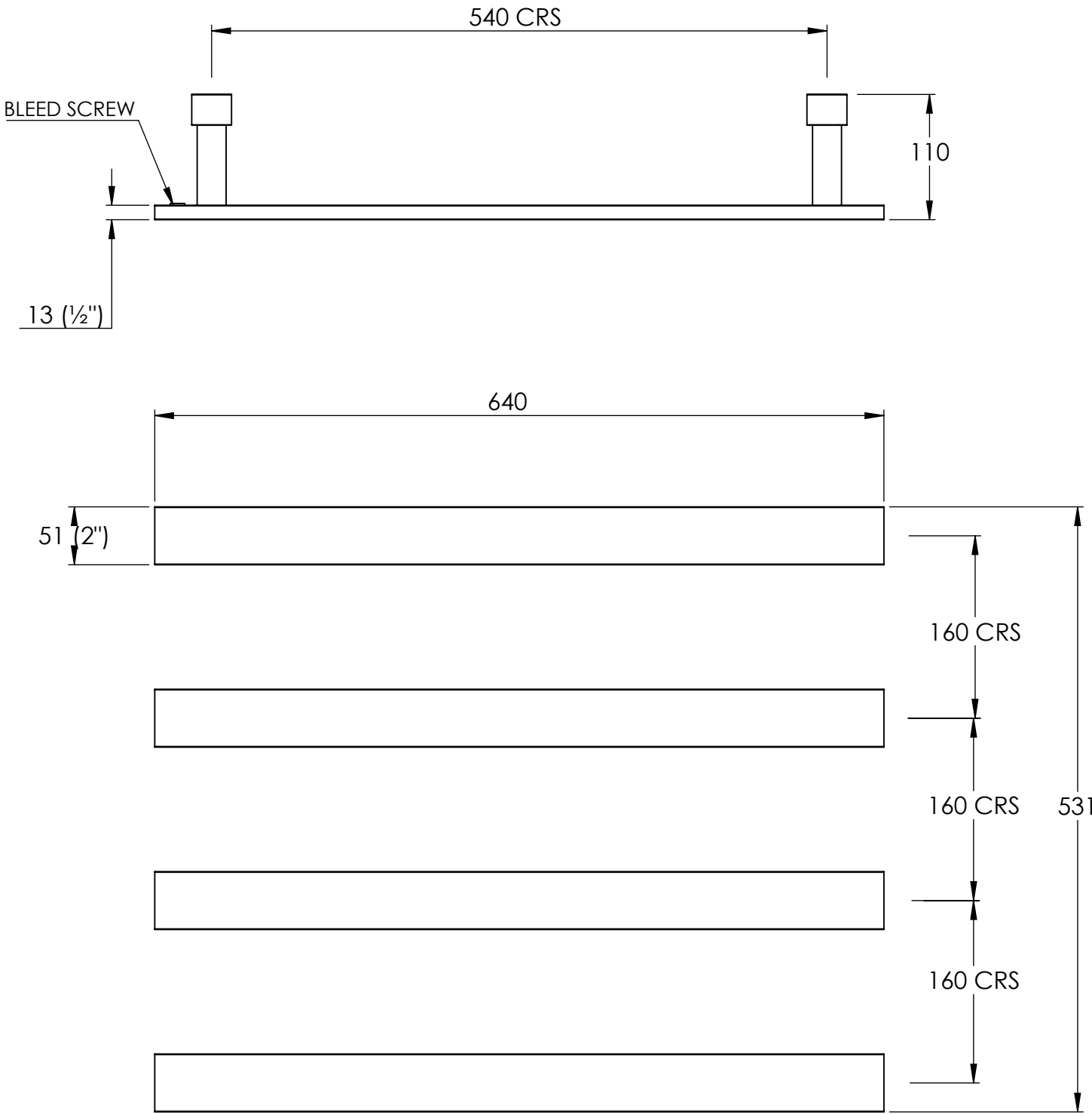




BARD & BRAZIER



NOTE:

TO BE USED IN CONJUNCTION WITH THE INSTALL FRAME AND FLOATING VALVES

THE NUMBER OF BARS CAN BE DECREASED AND INCREASED TO SUIT YOUR BATHROOM

PLEASE ENSURE THE TOP RAIL INCORPORATES THE BLEED SCREW.

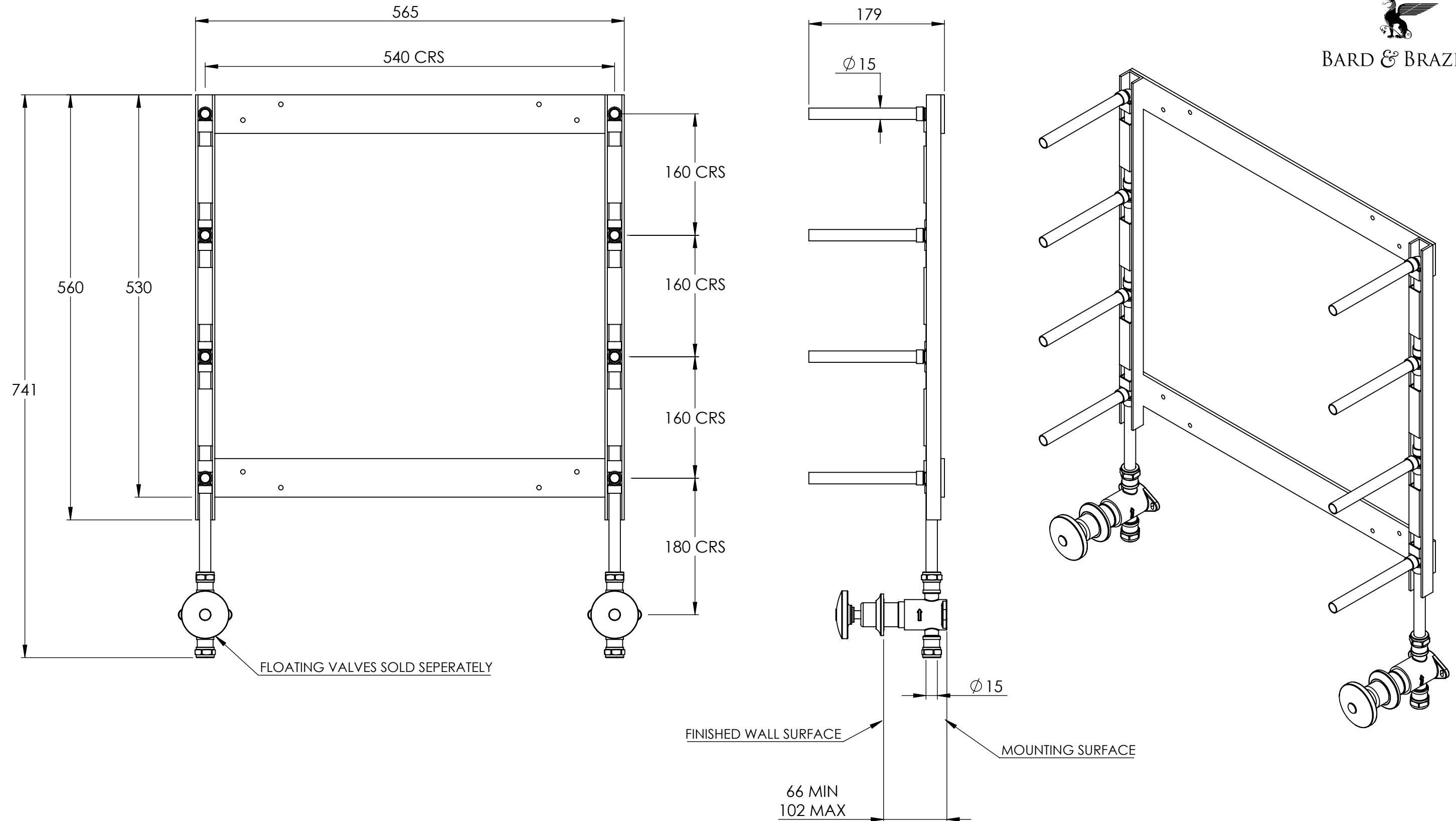
BTU/HR AT DELTA 60: 832 CONNECTIONS: 15mm COMPRESSION	TEST PRESSURE: 6 BAR MAX WORKING PRESSURE 3 BAR MAX WORKING TEMPERATURE: 100°C HEAT OUTPUT DETERMINED IN ACCORDANCE WITH EN 442		
	TITLE: ZINGO SULTAN FLOATING RAIL - 640 WIDE - 4 BARS - HYDRONIC		
BARD & BRAZIER LIMITED MARSTON ROAD WOLVERHAMPTON WEST MIDLANDS WV2 4LX UK T: +44 (0) 121 270 2222 E: INFO@BARDBRAZIER.CO.UK WWW.BARDBRAZIER.CO.UK BARD & BRAZIER RAILS ARE MADE IN ENGLAND FROM HIGH QUALITY BRASS AND CAN BE USED ON OPEN OR CLOSED CIRCUITS	 BARD & BRAZIER	SCALE: 1:5	DATE: 17/08/2018
		PRODUCT CODE: FZS1-4	

DO NOT SCALE DRAWING ALL DIMENSIONS ARE IN MILLIMETERS AND MAY VARY ± 5mm AS THEY ARE HANDMADE, HAND SOLDERED AND POLISHED

WE THEREFORE RECOMMEND THAT ANY INSTALLATION WORK BE CARRIED OUT UPON RECEIPT OF RAIL.



BARD & BRAZIER



DO NOT SCALE DRAWING ALL DIMENSIONS ARE IN MILLIMETERS AND MAY VARY $\pm 5\text{mm}$ AS THEY ARE HANDMADE, HAND SOLDERED AND POLISHED
WE THEREFORE RECOMMEND THAT ANY INSTALLATION WORK BE CARRIED OUT UPON RECEIPT OF RAIL.

BARD & BRAZIER LIMITED
MARSTON ROAD
WOLVERHAMPTON
WEST MIDLANDS
WV2 4LX
UK

T: +44 (0) 121 270 2222
E: INFO@BARDBRAZIER.CO.UK
WWW.BARDBRAZIER.CO.UK

BARD & BRAZIER RAILS ARE MADE IN ENGLAND
FROM HIGH QUALITY BRASS

TITLE:
FLOATING RAIL INSTALL FRAME -
4 BARS

BARD & BRAZIER

SCALE:
1:5
DATE:
03/03/2020
PRODUCT CODE:
INF1-4